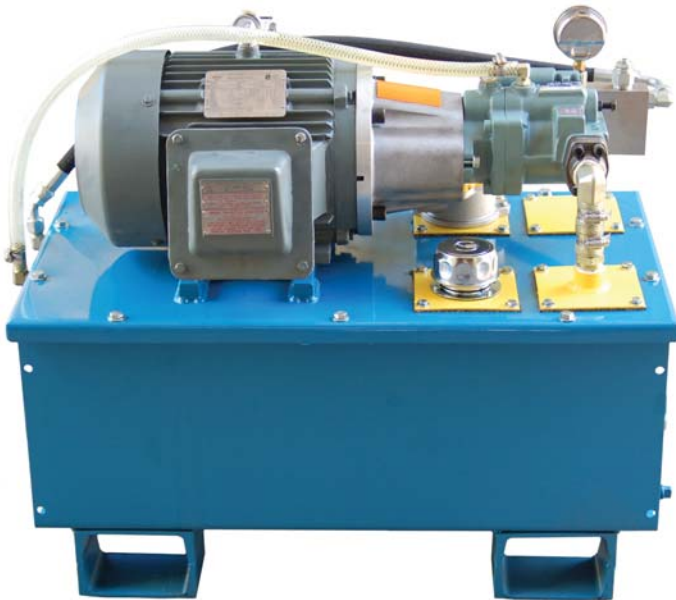


# HYDRAULIC POWER UNITS

## TOP MOUNT TANK



Top Mount Series

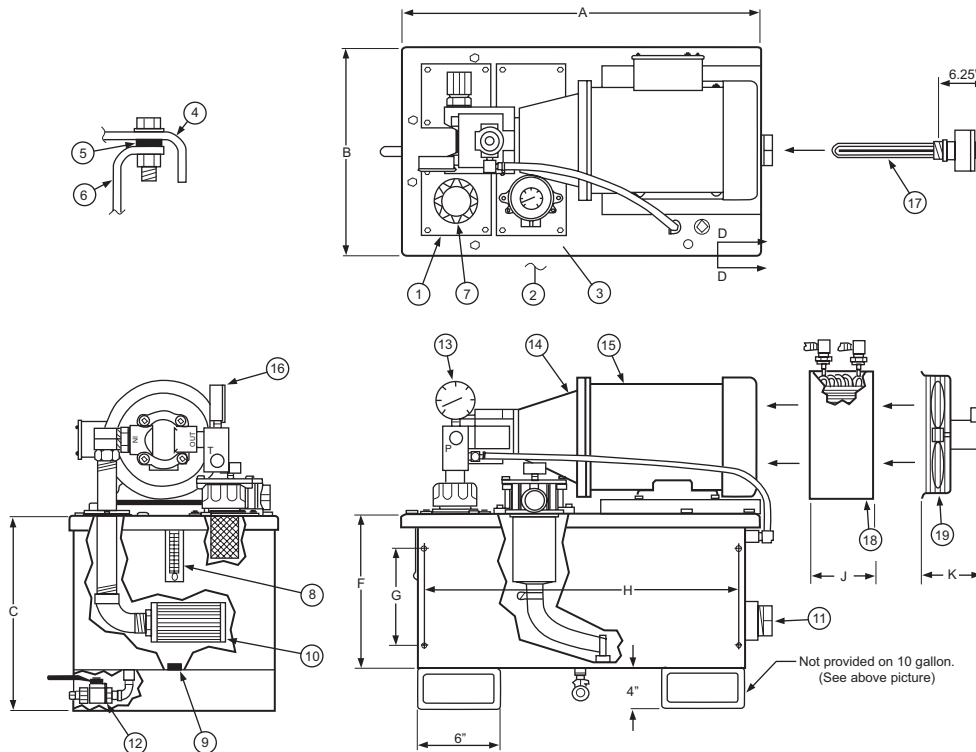


TMT20 Top Mount Tank

### Features

- Pump and Motor Accessible:** Ability to replace easily.
- Easy Reservoir Draining:** Pump not required for draining.
- Color Code Identification:** Allows for easy identification of items.
- In-Tank Filter System:** Provides easy element replacement without line drainage.
- Convenient Suction Strainer Maintenance:** Clean out access cover allows replacement of suction strainer without draining reservoir.
- Removable Top Plate:** Removable top allows for easy reservoir cleaning. No leaky end bells that make access for cleaning difficult.
- Conserves Space:** While still allowing easy maintenance, the top mount tank design saves floor space.

### Dimensional Data



#### ITEM IDENTIFICATION:

- CLEAN-OUT COVER (YELLOW)
  - VALVE MOUNTING AREA
  - RETURN FILTER (YELLOW)
  - TANK LID
  - RUBBERIZED GASKET
  - TANK BODY
  - FILLER/ BREATHER
  - SIGHT & TEMPERATURE GAUGE
  - MAGNETS (1 PER 5 GALLONS)
  - SUCTION STRAINER WITH BYPASS VALVE
  - 2" NPT HEATER COUPLING (OPTIONAL)
  - 1/2" NPT DRAIN BALL VALVE WITH PLUG
  - PUMP
  - PUMP MOTOR ADAPTER (ORANGE)
  - ELECTRIC MOTOR
  - PRESSURE GAUGE WITH SNUBBER
  - HEATER (OPTIONAL)
  - HEAT EXCHANGER (OPTIONAL)
  - COOLING FAN (OPTIONAL)
  - PAINT (OPTIONAL)
- COLOR CODES:  
 BLUE- UNIT COLOR PAINT  
 ORANGE- DANGER  
 YELLOW- MAINTENANCE  
 GRAY- ELECTRICAL

Model Number	Reservoir Capacity	Dimensions (Inches)									Std. Return Filter (10 $\mu$ )	4" Lip Drip Pan	Maximum Horsepower
		A	B	C	F	G	H	J	K				
TMT10	10 Gallon	26.0	15.0	12.3							ITF200-8FS-10MNPE		5
TMT20	20 Gallon	32.0	17.5	16.0	12.0	8	30.6	4.25	5.9		ITF200-12FS-10MNPE	30.9" x 48"	10
TMT35	35 Gallon	36.5	22.5	17.5	13.5	8	35.3	4.25	6.0		ITF250-12FS-10MNPE	30.9" x 48"	15
TMT70	70 Gallon	46.5	26.3	20.5	16.5	8	45.3	4.25	6.0		ITF425-24FS-10MNPE	38.8" x 52"	50
TMT100	100 Gallon	46.5	26.3	26.0	22.0	8	45.3	9.0	6.0		ITF450-24FS-20-10	38.8" x 52"	100
TMT150	150 Gallon	46.5	26.3	37.0	33.0	8	45.3	9.0	6.0		ITF450-24FS-30-10	38.8" x 52"	100

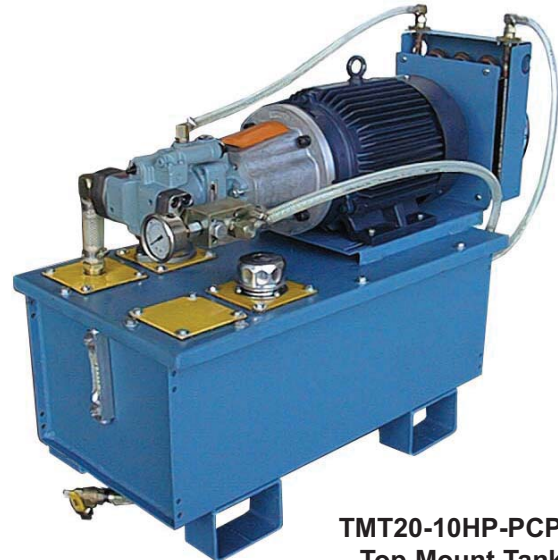
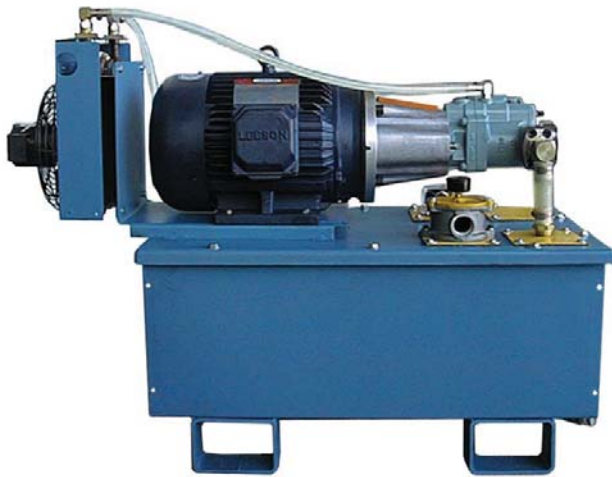


# HYDRAULIC POWER UNITS

TOP MOUNT TANK



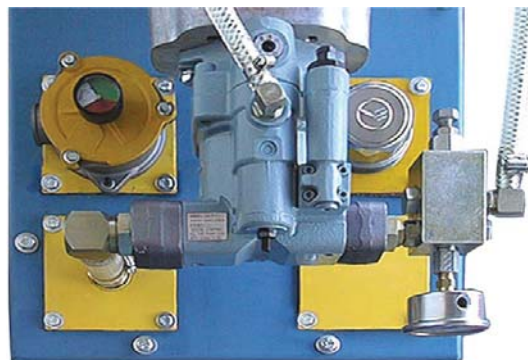
Top Mount Series



**TMT20-10HP-PCP8**  
Top Mount Tank:  
HE90-HF cooler,  
DR30 safety relief

**Covers may be relocated:**  
Fill, suction, return or access plates may  
be moved as specified by the customer.  
(units 20+ gallons)

Standard arrangement is same as the  
dimensional drawing (left).



**TMT200- Lubrication System:**  
We provide the reservoir, pump/ motors, heaters,  
coolers, modulating valves and Barksdale level,  
pressure, and temperature controls.

Customer contracts directly with our motor  
controls house for the electrical package.

