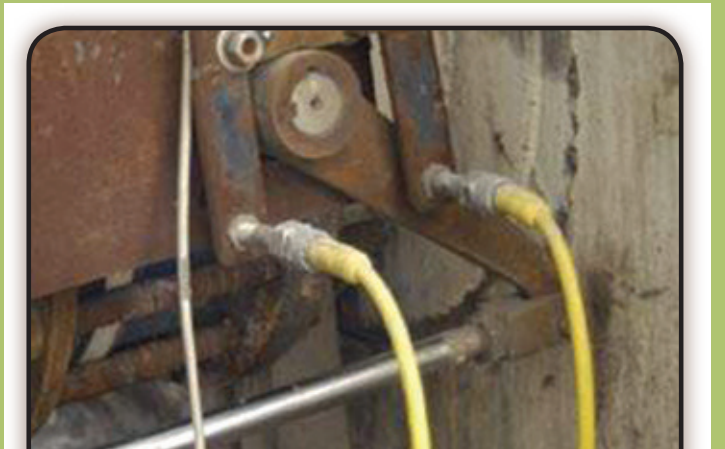
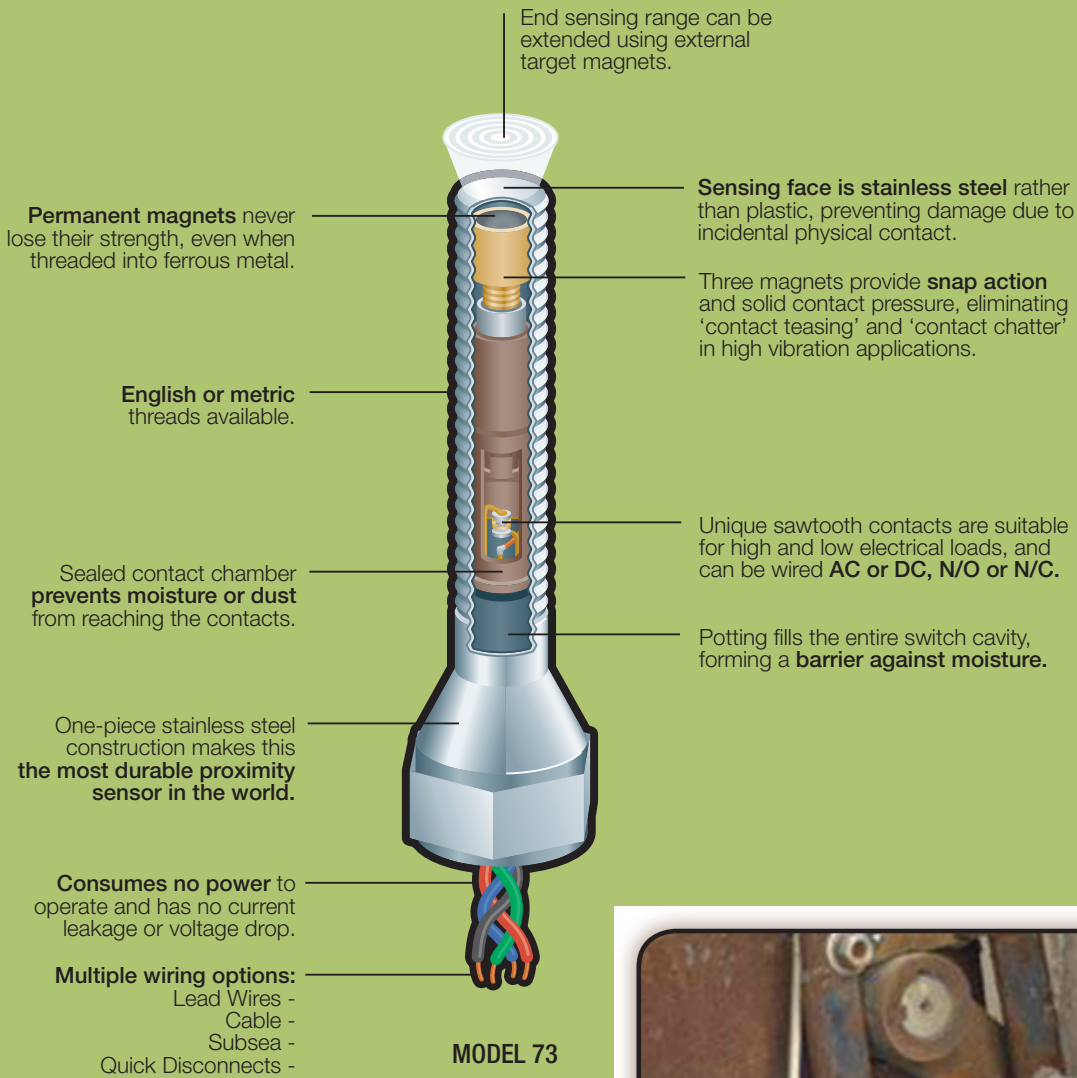


GO[®] SWITCH - ROUND SENSORS

Built to last in the most demanding plant conditions

With their all stainless steel construction, flexible AC/DC, NO/NC, and SPDT/DPDT contact configurations, superior corrosion resistance, and global certifications for all hazardous areas, 70 Series GO Switches outperform inductive proximity sensors in the toughest applications.



MODELS 71-72

GO® Switch Models 71 and 72 have the smallest diameters of any round leverless limit switches, and are used extensively in factory automation applications.



Features

- SPDT contacts rated 4amp/120vac, 3amp/24vdc
- AC/DC, NO/NC flexibility
- Stainless steel housings
- Inherently Intrinsically Safe
- -40° to 105°C (-40° to 221°F) operating temperature

Options

- Zone 0, 1, or 2 hazardous areas
- 204°C (400°F) high temperature
- Quick disconnect connectors
- English or metric threads

MODELS 7G, 7H & 7L

GO® Switch Models 7G, 7H, and 7L offer hermetic seal or Double Pole Double Throw contact configurations. Model 7L has LEDs for local performance monitoring.



Features

- SPDT or DPDT contacts rated 4amp/120vac, 3amp/24vdc
- AC/DC, NO/NC flexibility
- 250mA/120VAC, 24VDC.
- Stainless steel housings
- Inherently Intrinsically Safe
- -40° to 105°C (-40° to 221°F) operating temperature

Options

- Zone 0, 1, or 2 hazardous areas
- 204°C (400°F) high temperature
- Quick disconnect connectors
- Hermetically sealed contacts
- English or metric threads



“Over the years, I have seen GO Switches take crushing blows from large falling rocks in the cement industry and still function flawlessly.”
- **Electrical Engineer, US Cement Factory**



“GO Switch is the only dependable switch we use.”
- **Project Engineer, Gulf Coast Chemical Plant**

MODELS 73-77

The GO® Switch Model 73 is our most popular leverless limit switch.

Its solid stainless steel construction and global certifications make it the ideal choice for a variety of applications. Model 74 is the same, without the conduit hub. Models 75, 76, and 77 are longer, with more thread surface and adjustability.



Features

- SPDT contacts rated 4amp/120vac, 3amp/24vdc
- AC/DC, NO/NC flexibility
- Stainless steel housings
- Inherently Intrinsically Safe
- -40° to 105°C (-40° to 221°F) operating temperature

Options

- Zone 0, 1, or 2 hazardous areas
- 204°C (400°F) high temperature
- Quick disconnect connectors
- Underwater capabilities
- English or metric threads