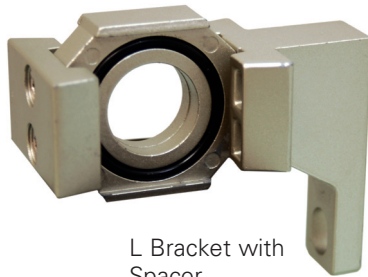


ACCESSORIES

L-TYPE BRACKET/ L-TYPE BRACKET WITH SPACER



L Bracket Only



L Bracket with Spacer

- L-Type Bracket is used with existing Y-Type Spacer and its hardware.
- Spacer with L-Type Bracket is a complete accessory that includes the Y-Type Spacer "O" rings and screws and it will tie two Modular Units together and can be used for mounting the units.

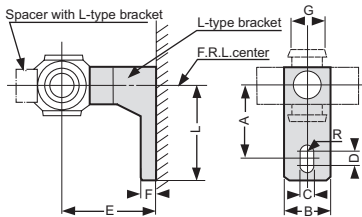
ORDERING INFORMATION

310 - L or 30 - YL

Series	Code	Description	Series	Code	Description
210	L	"L" Bracket	20	YL	"L" Bracket w/ Spacer
310			30		
410			40		
510			50		
610			60		

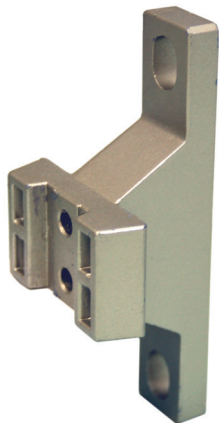
DIMENSIONAL DATA

Units: inches

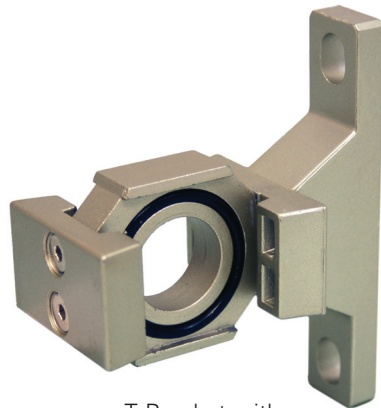


L-Type Bracket	Spacer with L-Type Bracket	A	B	C	D	E	F	G	R	L	Applicable Model
210L	20YL	0.94	0.59	0.22	0.12	1.18	0.20	0.39	0.11	1.30	FRL202/ 04
310L	30YL	1.38	0.63	0.28	0.16	1.61	0.28	0.43	0.14	1.77	FRL304/ 06
410L	40YL	1.57	0.87	0.35	0.16	1.97	0.28	0.55	0.18	1.97	FRL408
510L	50YL	1.57	0.87	0.35	0.16	1.97	0.28	0.55	0.18	1.97	FRL412
610L	60YL	1.97	0.94	0.47	0.16	2.76	0.39	0.59	0.24	2.46	FRL516

T-TYPE BRACKET/ T-TYPE BRACKET WITH SPACER



T Bracket Only



T Bracket with Spacer

- T-Type Bracket is used with existing Y-Type Spacer and its hardware.
- Spacer with T-Type Bracket is a complete accessory that includes the Y-Type Spacer "O" rings and screws and it will tie two Modular Units together and can be used for mounting the units.

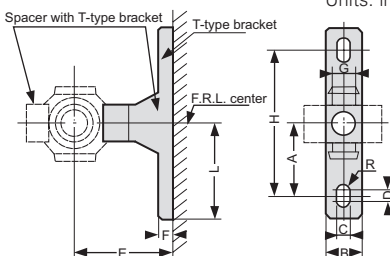
ORDERING INFORMATION

410 - T or 40 - YT

Series	Code	Description	Series	Code	Description
210	T	"T" Bracket	20	YT	"T" Bracket w/ Spacer
310			30		
410			40		
510			50		

DIMENSIONAL DATA

Units: inches

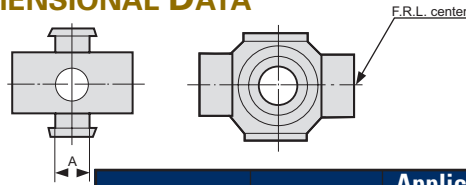
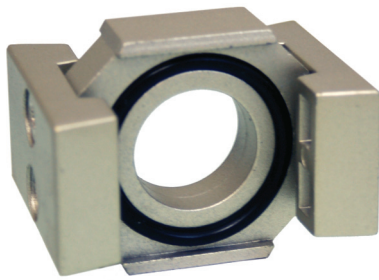


T-Type Bracket	Spacer with T-Type Bracket	A	B	C	D	E	F	G	H	R	L	Applicable Model
210T	20YT	0.94	0.59	0.22	0.12	1.18	0.20	0.39	1.57	0.11	1.30	BL202/ 04
310T	30YT	1.38	0.63	0.28	0.16	1.61	0.28	0.43	2.76	0.14	1.77	BL304/ 06
410T	40YT	1.57	0.87	0.35	0.16	1.97	0.28	0.55	3.15	0.18	1.97	BL408
510T	50YT	1.57	0.87	0.35	0.16	1.97	0.28	0.55	3.15	0.18	1.97	BL412

ACCESSORIES

Y-TYPE SPACER Used for tying two modular components together

DIMENSIONAL DATA



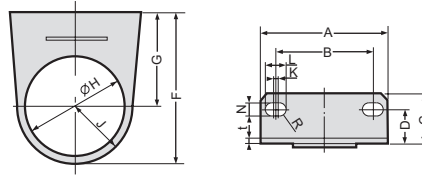
Model	A	Applicable Model
20Y	0.39	FRL202/ 04
30Y	0.43	FRL304/ 06
40Y	0.55	FRL408
50Y	0.55	FRL412
60Y	0.59	FRL516

ORDERING INFORMATION

50 - Y

Series	Code	Description
20	Y	"Y" Spacer
30		
40		
50		
60		

MOUNTING BRACKET FOR REGULATORS & PIGGYBACK B UNITS Used for mounting "R" and "B" Units



ORDERING INFORMATION

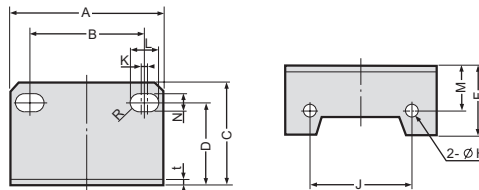
320 - MBRB

Series	Code	Description
220	MBRB	Mounting Bracket for Regulator & Piggyback Units
320		
420		

DIMENSIONAL DATA

Model	A	B	C	D	F	G	H	J	K	L	N	R	t	Applicable Model
220MBRB	2.17	1.34	0.98	0.75	1.97	1.18	1.32	0.79	0.39	0.61	0.21	0.11	0.09	R200, B200
320MBRB	2.09	1.57	0.83	0.53	2.60	1.61	1.67	0.98	0.06	0.31	0.26	0.13	0.09	R300, B300
420MBRB	2.76	2.13	1.06	0.71	3.15	1.97	2.07	1.18	0.08	0.41	0.33	0.17	0.09	R4-500, B400

MOUNTING BRACKET FOR FILTER AND OR LUBRICATOR Used for mounting "F" or "L" Units individually



ORDERING INFORMATION

540 - MBFL

Series	Code	Description
240	MBFL	Mounting Bracket for Filter or Lubricator
340		
440		
540		
640		

DIMENSIONAL DATA

T-Type Bracket	A	B	C	D	F	H	J	K	L	M	N	R	t	Mounting Screw	Applicable Model
240MBFL	1.57	1.06	1.30	1.06	0.71	0.18	1.02	0.12	0.33	0.55	0.21	0.11	0.09	M4x8 Pan Hd	F/ L200
340MBFL	2.09	1.57	1.54	1.26	0.89	0.18	1.38	0.06	0.31	0.75	0.26	0.13	0.09	M4x8 SHCS	F/ L300
440MBFL	2.76	2.13	1.85	1.50	1.24	0.22	1.85	0.08	0.41	0.79	0.33	0.17	0.09	M5x10 SHCS	F/ L408
540MBFL	2.76	2.13	1.85	1.50	1.08	0.22	1.85	0.08	0.41	0.79	0.33	0.17	0.09	M5x10 SHCS	F/ L412
640MBFL	3.54	2.60	2.52	2.05	1.69	0.26	2.56	0.08	0.51	1.18	0.43	0.22	0.13	M6x10 SHCS	F/ L500